



PENNWEST

reserve

R

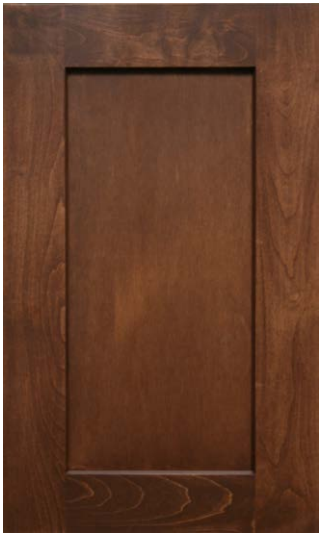
ULTRA



French Country Oak
Mission Flat Panel



Barnwood Oak
Mission Flat Panel



Warm Sienna
Mission Flat Panel



Hickory
Raised Panel



Shadow Grey
Mission Flat Panel



White
Mission Flat Panel



Precision Cut and Dadoed Construction Fastened and Hot Glued - Ensures a Long Lasting and Square Cabinet Box

3/4 Overlaid Cabinet Doors & Drawer - Limited Exposure of Cabinet Stiles

3/4" Thick Shelving with Finished Edges - Prevents Warping of Shelves

Base and Wall Cabinet Adjustable Shelving - Fit Your Lifestyle

3/4" Face Frames - Durable and Securely Holds Fasteners for Long Lasting Use

Pocket Screws - Ensure a Strong and Square Frame

Dove-Tail Constructed Drawers - Superior Drawer Strength

Undermount Soft Close Drawer Guides

Concealed and Recessed Hinges - Superior Door Strength

Recessed Toe Kick - Work at Counters with Ease

No Exposed Hanging Cleats- More Storage and Cleaner Look

KCMA Testing

- Overhead Cabinets Rated to 500 pound Capacity
- Drawers Opened 28,000 Times with Weight
- Cabinet Doors Opened 25,000 Times
- Extreme Testing of Cabinet Finish



Evermore Custom Cabinets endure a series of rigorous tests, measuring structural integrity. Cabinet doors, drawers and even the finish are tested before earning the KCMA Cabinet Certification.

Visit www.KCMA.org
for more information



Ultra 2

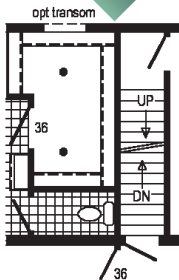


2P2402X

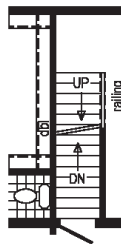
32x68 Approx. 2066 sq ft

Some features shown may be optional or added on-site by others.

Optional Stairwell



Opt Attic Stairs

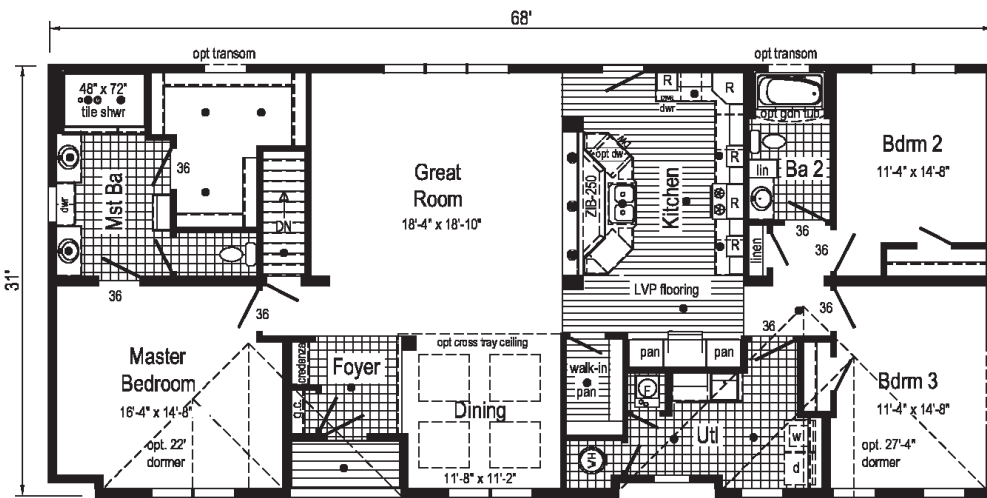
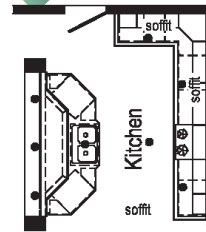


Optional Euro Kitchen



Kitchen with Soffit

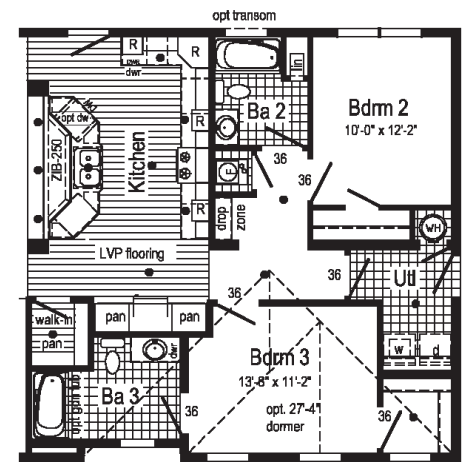
Optional full perimeter Drywall Soffit and Beams Not Available.



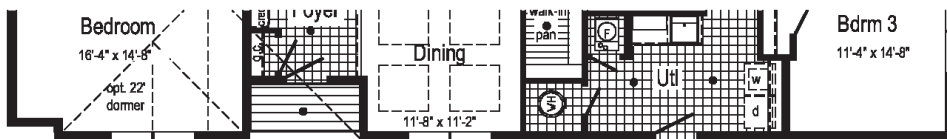
R = Std. 30/36 staggered overhead

Note: A portion of the LVP flooring is installed on site.

● = Std. can light



Optional End Utility with 3rd Bath Configuration



Alternate Application for Front Garage

suggested garage location

Ultra 2 Photos



Scan to Watch Video!



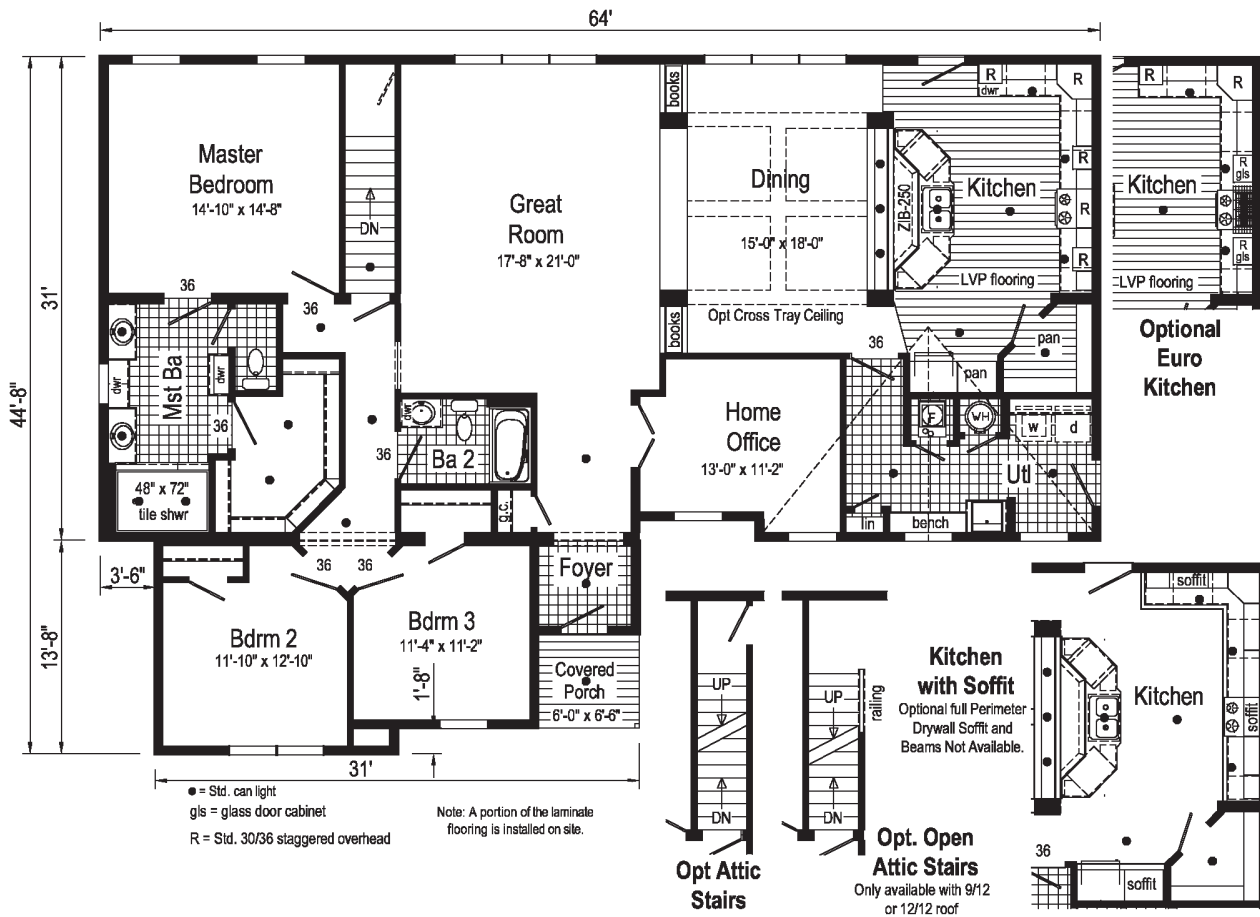
Ultra 3



3P2401X

46x64 Approx. 2333 sq ft

Some features shown may be optional or added on-site by others.



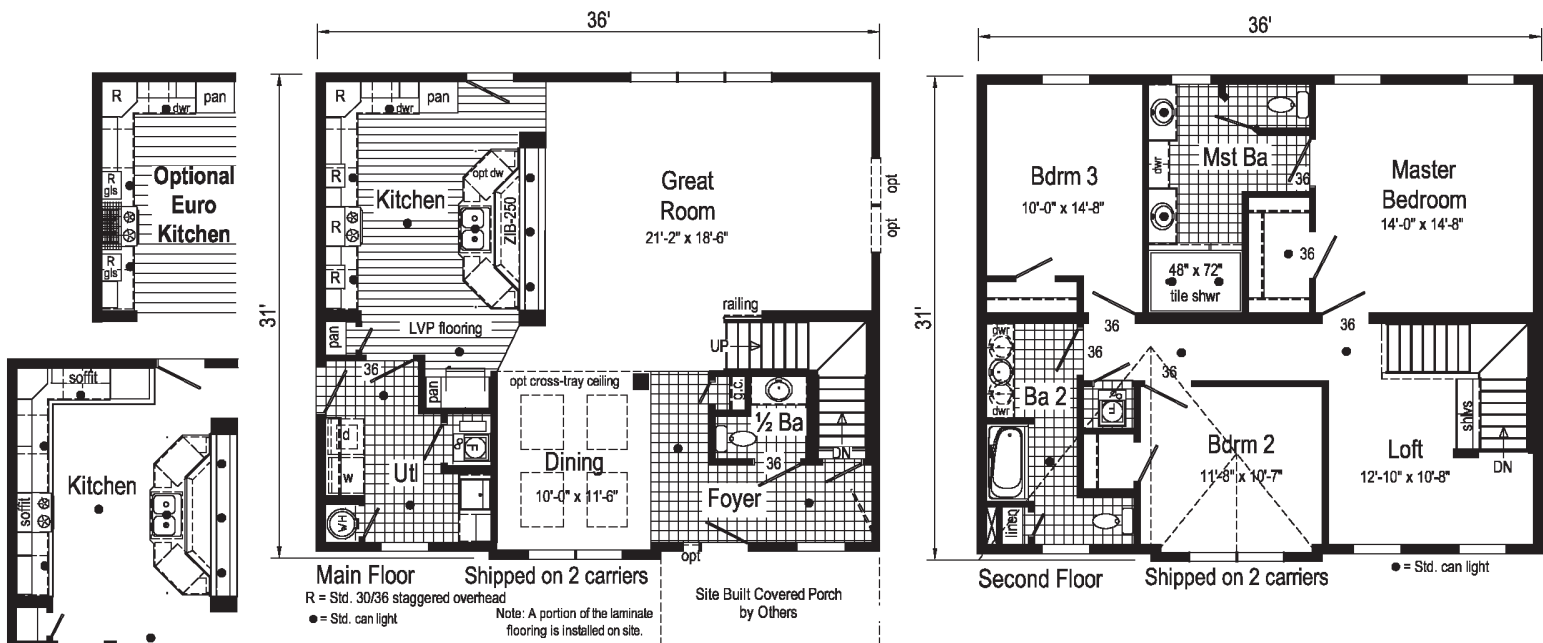
Ultra 4



6P2401X

32x36 Approx. 2206 sq ft

Some features shown may be optional or added on-site by others.



Kitchen with Soffit
 Optional full Perimeter Drywall Soffit and Beams Not Available.

Ultra 5



6P2402X

32x60/36 Approx. 2579 sq ft

Some features shown may be optional or added on-site by others.



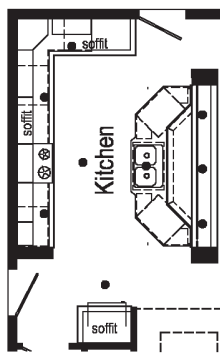
Ultra 6



2P2401X

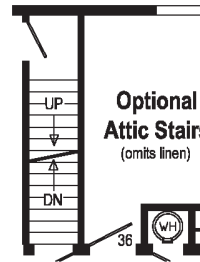
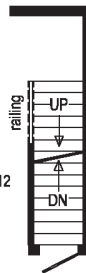
32x60 Approx. 1827 sq ft

Some features shown may be optional or added on-site by others.

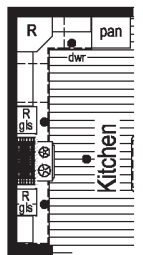


Kitchen with Soffit
Optional full Perimeter Drywall Soffit and Beams Not Available.

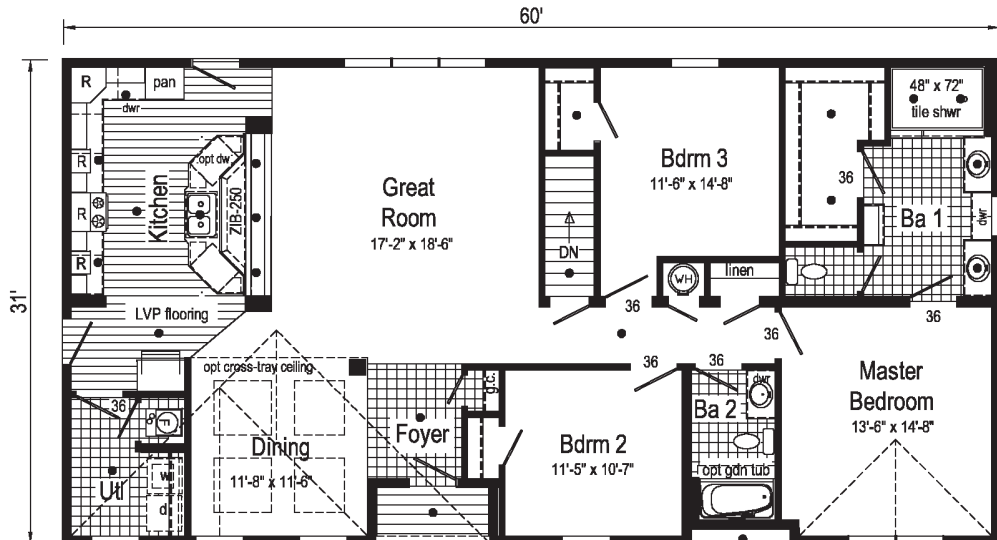
Opt. Open Attic Stairs
Only available with 9/12 or 12/12 roof (omits linen)



Optional Attic Stairs
(omits linen)



Optional Euro Kitchen



Note: A portion of the LVP flooring is installed on site. ● = Std. can light gls = glass door cabinet opt. 13'-4" dormer

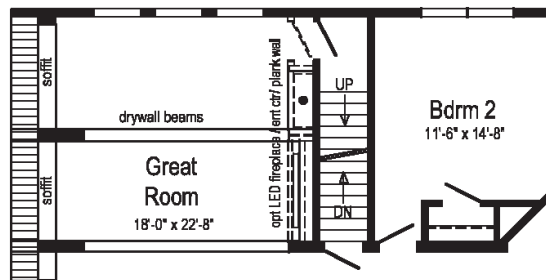
Ultra 7



2P2403X

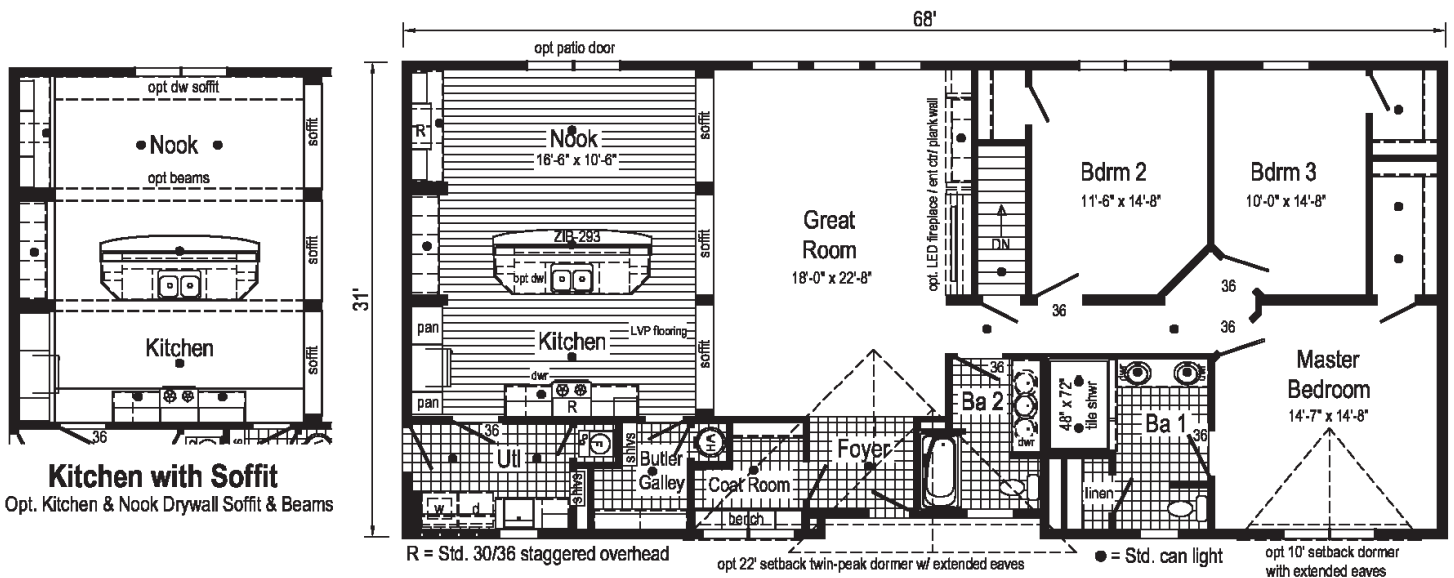
32x68 Approx. 2089 sq ft

Some features shown may be optional or added on-site by others.



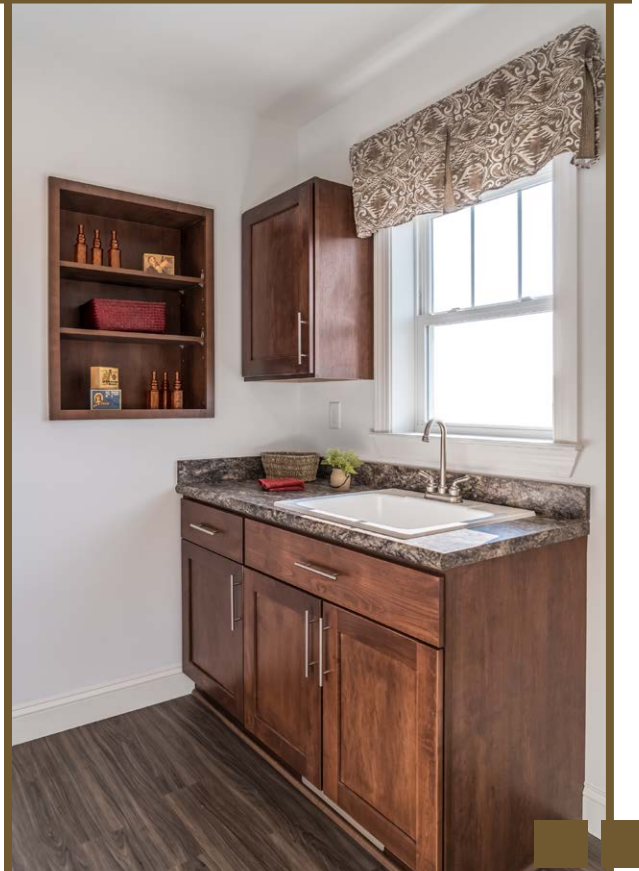
Optional Attic Stairs

Note:
Attic stairs requires drywall beams for dropped beams and extended support columns..

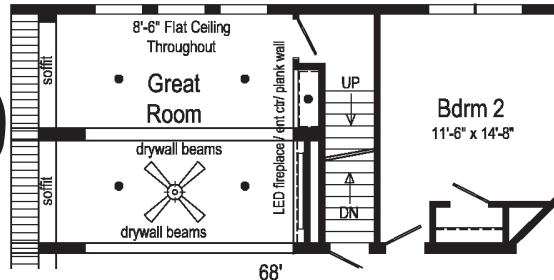


Kitchen with Soffit
Opt. Kitchen & Nook Drywall Soffit & Beams

Ultra 7 Photos



EVOLUTION BUNDLE



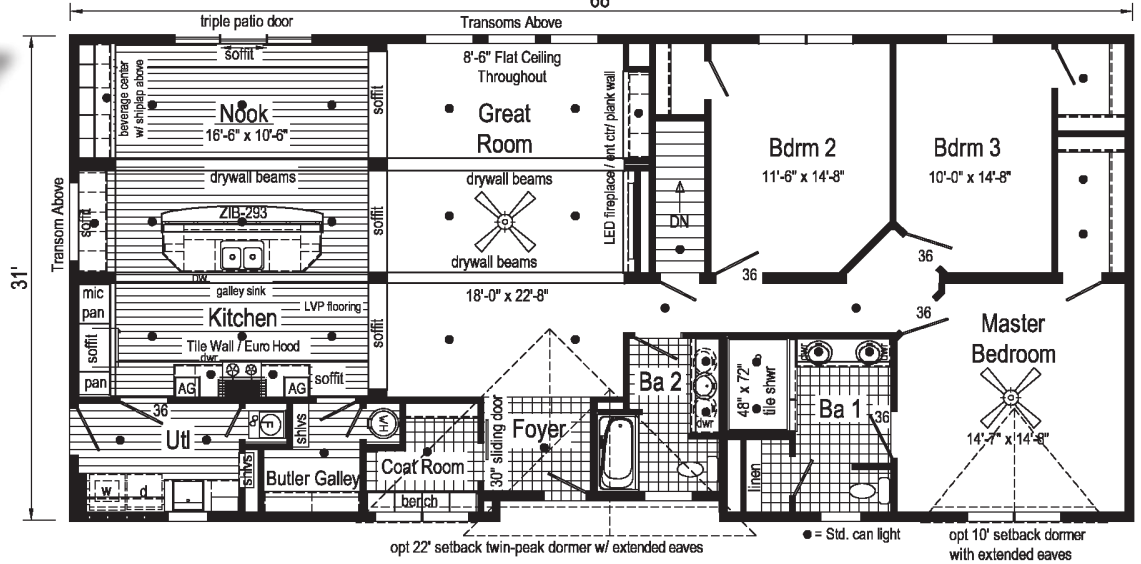
Optional Attic Stair

Note:
 Attic stairs requires drywall dropped beams and extended support columns..

Ultra 7

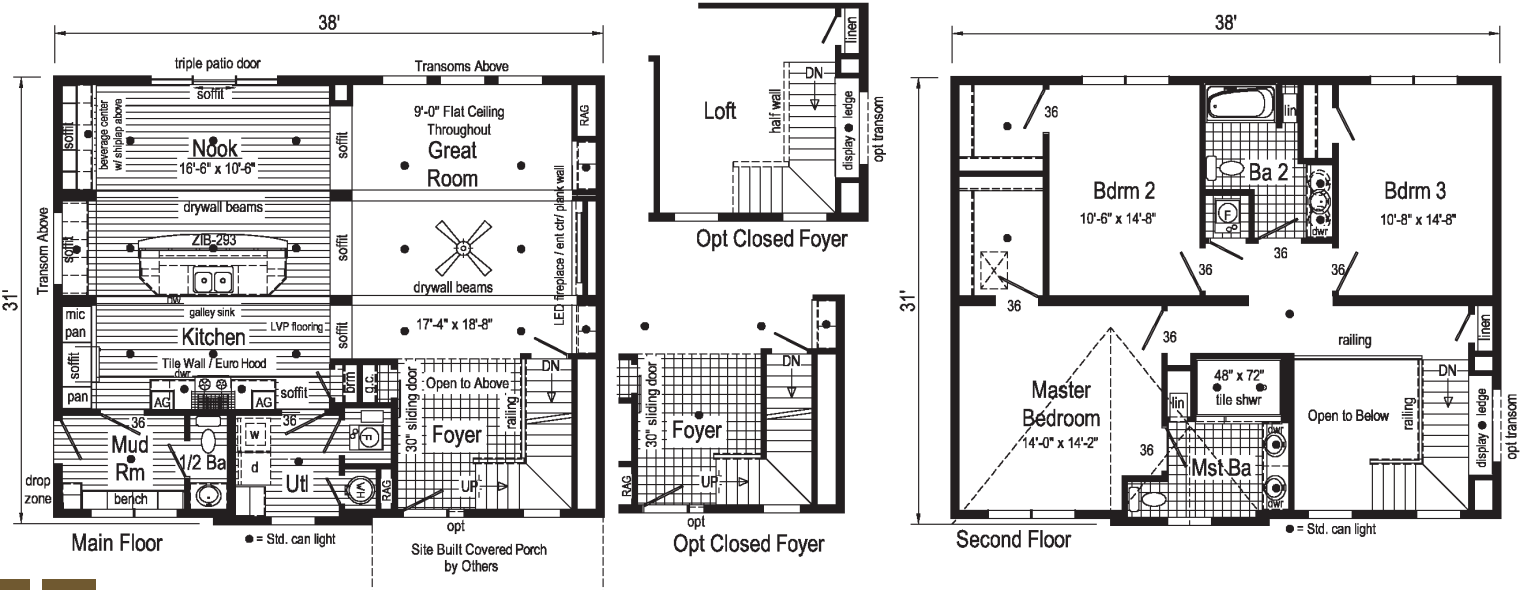


Scan to Watch Video!



EVOLUTION BUNDLE

Ultra 8



EVOLUTION

BUNDLE

- LED Flush Mount Lights in Kitchen and Nook
- LED Flush Mount Lights in Utility, Butler Pantry, Hall, and Coat Room
- Drywall Beams in Kitchen and Great Room
- 8'6" Ceiling
- 42" Overhead Kitchen Cabinets with Soffits
- 10' Double Sliding Patio Door
- Transom Window on Kitchen Endwall
- (3) Transoms Above Great Room Windows
- Beverage Center in Nook
- Shiplap Accent Walls
- (2) Appliance Garages in Kitchen
- Chef's Signature Range Hood
- Ceramic Tile Behind Range
- Sliding Barn Door into Coat Room
- LED Fireplace w/ Ceramic Tile and Shiplap Entertainment Center
- (2) Framed Mirrors Over Master Vanity
- Drywall Soffits w/ LED Flush Mount Lights in Bathroom
- Whirlpool Ruby Appliance Bundle
- Ceiling Fan in Great Room and Master Bedroom
- Floorte in Utility and Butler Pantry



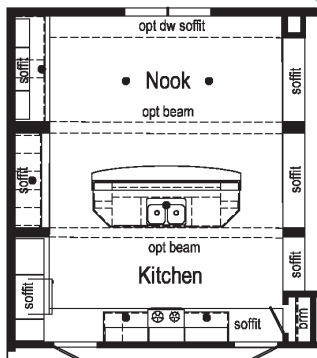
Ultra 8



6P2403X

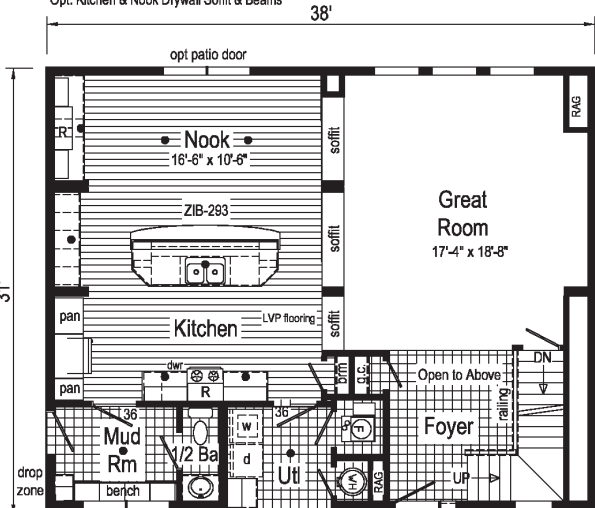
32x38 Approx. 2329 sq ft

Some features shown may be optional or added on-site by others.



Kitchen with Soffit

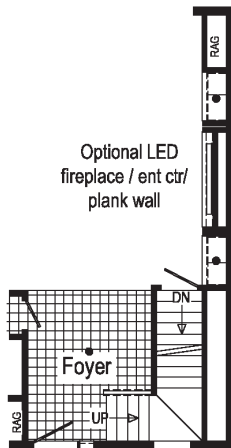
Opt. Kitchen & Nook Drywall Soffit & Beams



Main Floor

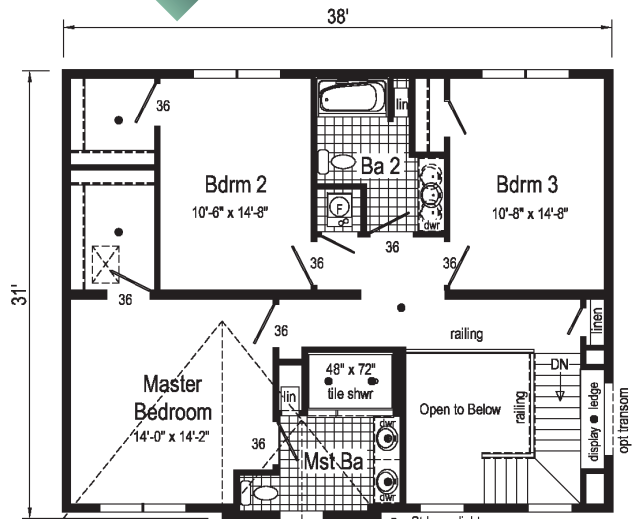
● = Std. can light
Note: A portion of the laminate flooring is installed on site.

opt Site Built Covered Porch by Others

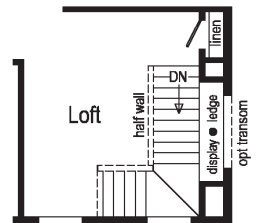


Opt Closed Foyer

Optional LED fireplace / ent ctr/ plank wall



Second Floor



Opt Closed Foyer

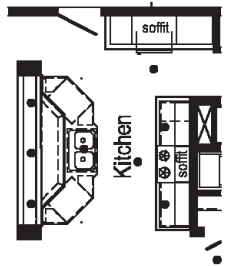
Ultra 9



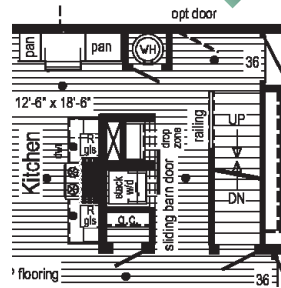
2P2404X

32x58 Approx. 1780 sq ft

Some features shown may be optional or added on-site by others.

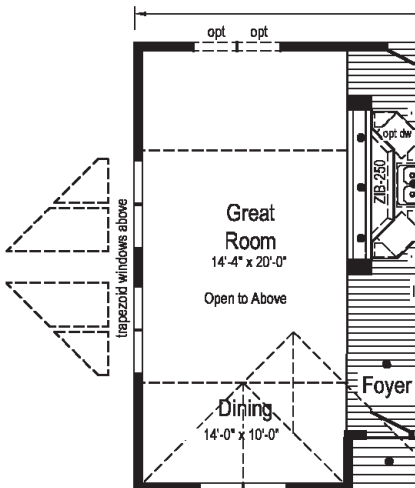


Kitchen with Soffit
Optional full Perimeter Drywall Soffit and Beams Not Available.

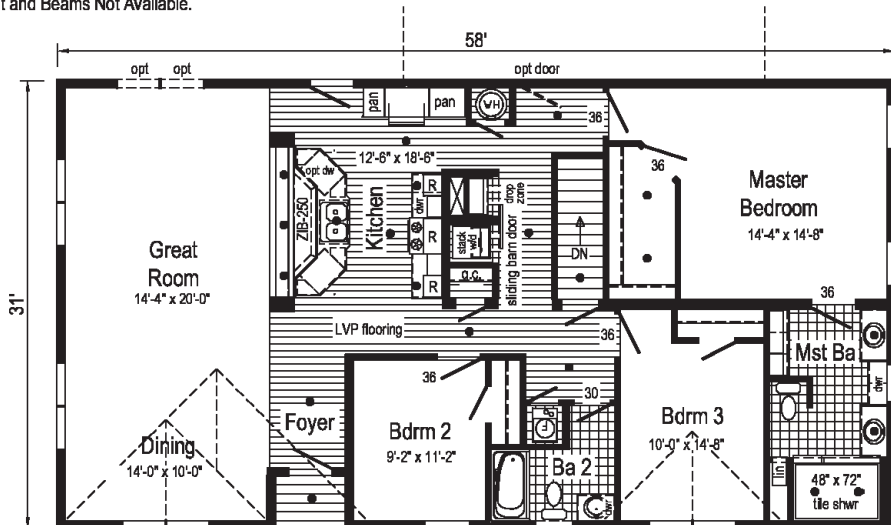


Optional Euro Kitchen

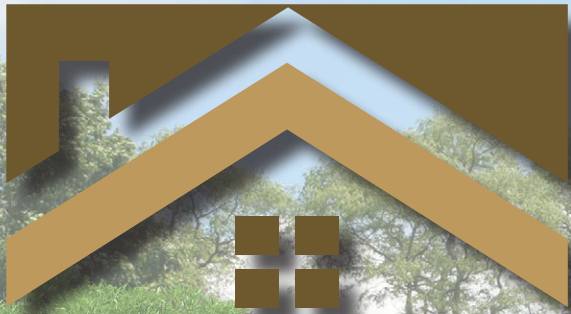
Opt. Open Attic Stairs
Only available with 9/12 or 12/12 roof



Optional Chalet Cape Roof



● = Std. can light
gls = glass door cabinet
R = Std. 30/36 staggered overhead
opt. 22' twin-peak dormer
opt. 13'-4" dormer
Note: A portion of the LVP flooring is installed on site.



PENNWEST H O M E S



Your Independent Retailer is:

Pennwest Homes
4 Pennwest Way Route 38
Emlenton, PA 16373
www.pennwesthomes.com

Connect with Us!



All descriptive representations of the products on this brochure are believed to be correct at the time of publication. However, due to continued product improvement and changes in suppliers design and production, accuracy cannot be guaranteed. Therefore, equipment colors, material specifications, prices and model availability are subject to change without notice. All information and images contained in this brochure are property of The Commodore Corporation and for the use by active dealers of the company only. © AP 2.5M 3/20